



Wireless Routing Analysis Phase II by ECaTS

Geographic interface for more informed and efficient wireless routing decisions.

Routing can be a tricky business because it involves the cooperation of multiple entities—and there can be serious consequences when it's done improperly. The Emergency Call Tracking System (ECaTS) Wireless Routing Analysis (WRA) module contains a suite of reports that analyze your wireless routing for each cell sector based on data from the local call handling platform.

The WRA Phase II module provides even greater benefits in an extremely user-friendly environment for better decision-making amongst both local and state jurisdictions leading to improved emergency response.

WRA PH II helps reduce misroutes.

Intrado now offers an innovative enhancement to the tried-and-true WRA module in a single unified tool that streamlines workflows and can help reduce misroutes. With WRA PH II, decision-makers gain the same ECaTS insights that hundreds of PSAPs rely upon for critical administrative functions along with a geographic interface to review and make important choices about the wireless routing sheets that impact their daily call activities.

Spatial Data vs. Tabular Data: Tabular-oriented ESN Routing sheets sent from carriers are not ideal for validating geographic locations. The WRA PH II map-based visualizations allow users to quickly identify overlaps, gaps, misalignment and other anomalies, allowing designated users the ability to accept or reject changes, or pend changes for future review as they more efficiently progress through the once-tedious workflow of validating sheets and shapefiles.

One Tool vs. Swivel Chair: WRA PH II reduces complexity for your wireless routing decision makers, giving them the power to organize data without bouncing between multiple tools.

Reduces Misroutes vs. Mere Reporting: Efficiencies created by WRA PH II help you make recommendations for improved cellular call routing that serves to reduce misroutes and unnecessary transfers and allows for faster response.

Information to Insight

Let's save more lives together.

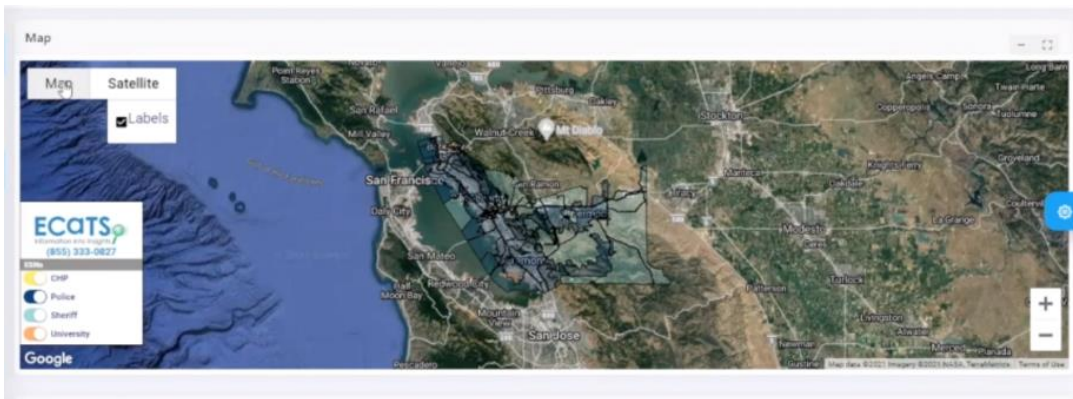
Connect with us to customize a reporting and analyzing solution that meets your unique requirements.

Online: ecats911.com

Email: info@ecats911.com

Phone: 1-855-333-0826

Map-based User Interface gives State agencies greater access, visibility and operational insight for more informed wireless routing decisions.



The importance of mission-critical recommendations made for wireless call routing cannot be overstated. Purpose-built to make your work easier, the ECaTS WRA module provides insight into how calls are delivered to your PSAP, if calls that should be directed to you are not routing correctly, or if you're picking up calls that shouldn't come to you. Our solutions work with all CPE providers and adapt to suit the technology you already use.

This *exciting new Phase II feature* gives state emergency response entities and administrators an entirely new level of access. The ability to view 911 activity within an entire state's jurisdiction means your decisions are more informed with more predictable results.

Benefits

- Reduce time and effort
- Manage the process at your level
- Track changes for accuracy
- See how the routing could impact your PSAP
- Reduce misroutes and respond faster
- Proactive tool for reducing misroutes
- Hit the "Easy Button" and let Intuitus shoulder much of the burden for cybersecurity

Features

- One interface for the whole workflow
- User-defined access levels
- Historical view of edits throughout the workflow
- Map-based view of sites, coverage and jurisdiction overlays

About ECaTS

We're as passionate about public safety and saving lives as you are. That's why the ECaTS team works hand-in-hand with our customers as we develop, manage and optimize every facet of our reporting and analytics solutions. Our business is 100% dedicated to emergency call tracking and reporting so that you make decisions that lead to improved emergency response and, ultimately, more saved lives.

For more information, please call [1-855-333-0826](tel:1-855-333-0826), email info@ecats911.com or visit ecats911.com

ECaTS